

ASSEMBLY & INSTALLATION INSTRUCTIONS



ASSEMBLY & INSTALLATION INSTRUCTIONS

CAUTION: FAILURE TO INSTALL THIS FIXTURE PROPERLY MAY RESULT IN SERIOUS PERSONAL INJURY OR DEATH AND PROPERTY DAMAGE. We recommend installation by a licensed electrician. This product must be installed in accordance with applicable installation code(s), by a person familiar with the construction and operation of the product and the hazards involved.*

Caution: Do not exceed 60 watt bulbs for this fixture. Use only recommended bulbs with fixture.

INSTALL FIXTURE

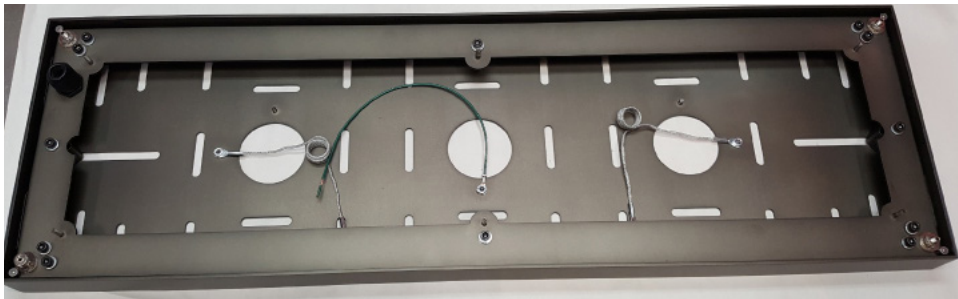
CAUTION: BE SURE POWER IS OFF AT THE MAIN BREAKER BOX PRIOR TO INSTALLATION.

CAUTION: INSTALLATION REQUIRES 2 PEOPLE

NOTE: PHOTOS ARE FROM LARGE FUSION PENDANT, PARTS MAY DIFFER IN OVERALL SIZE BUT INSTALLATION METHOD IS ACCURATE.

1. Carefully unpack all items from packaging.
2. Locate the canopy/gripper plate assembly.
3. Unscrew barrel knobs and remove canopy cover plate. Set aside for later use

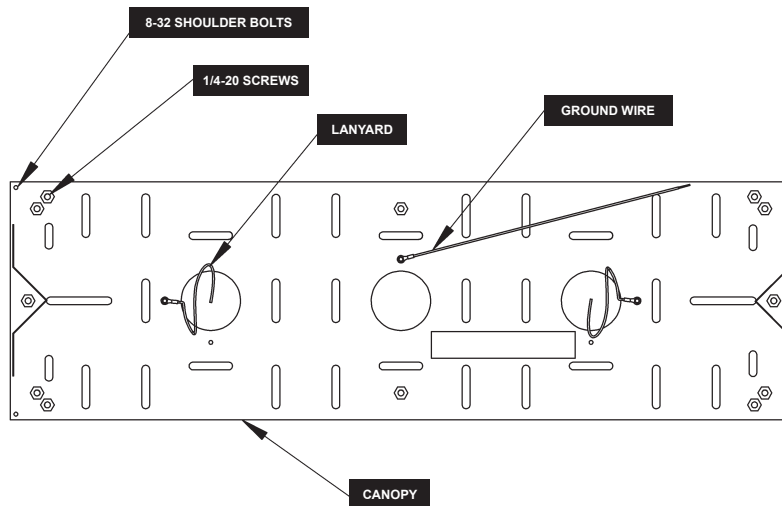
CAUTION: DO NOT REMOVE GLASS FROM BOXES OR STICKERS FROM THE FIXTURE. LABELING OF THESE PIECES IS CRITICAL TO A SUCCESSFUL INSTALL.



CANOPY GRIPPER PLATE ASSEMBLY

4. Unscrew (12) 1/4-20 screws and (4) 8-32 shoulder bolts. Remove bolts, screws and lockwashers and retain for later use.

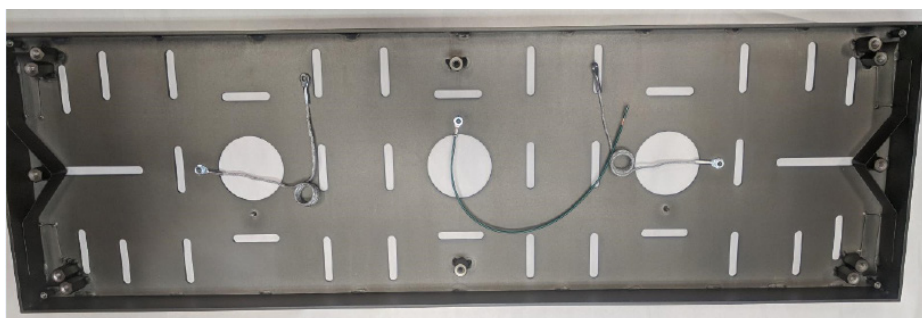
ASSEMBLY & INSTALLATION INSTRUCTIONS



5. Separate gripper plate from canopy and set aside.



6. Thread the wires in the electrical box through one of the center holes in the canopy.

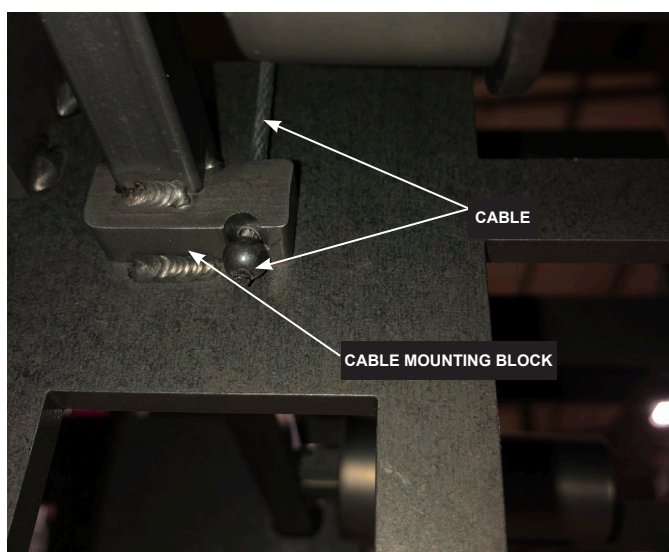


CANOPY

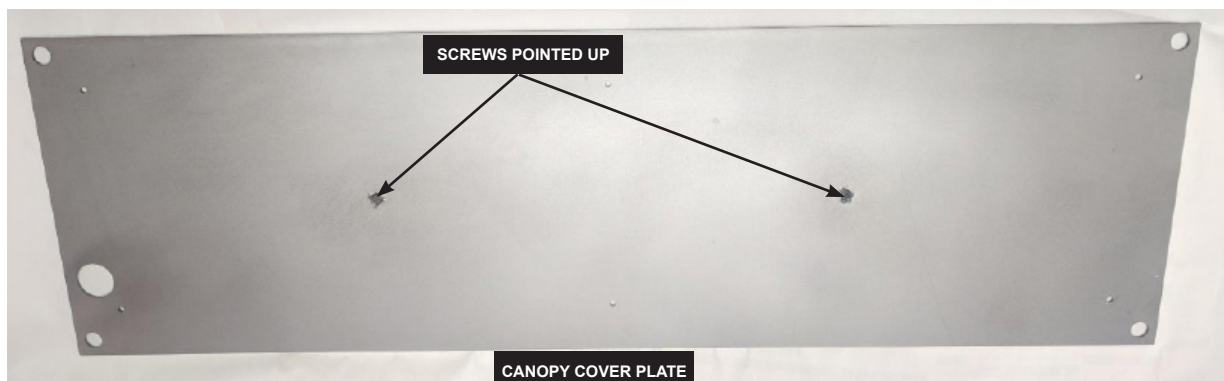
ASSEMBLY & INSTALLATION INSTRUCTIONS

CAUTION: THIS FIXTURE IS VERY HEAVY. INDIVIDUAL BUILDING AND STRUCTURAL CONDITION PRESENT UNIQUE REQUIREMENTS AND CONSULTATION WITH A STRUCTURAL ENGINEER IS STRONGLY RECOMMENDED. DRILLING ADDITIONAL HOLES FOR MOUNTING SCREWS MAY BE REQUIRED.

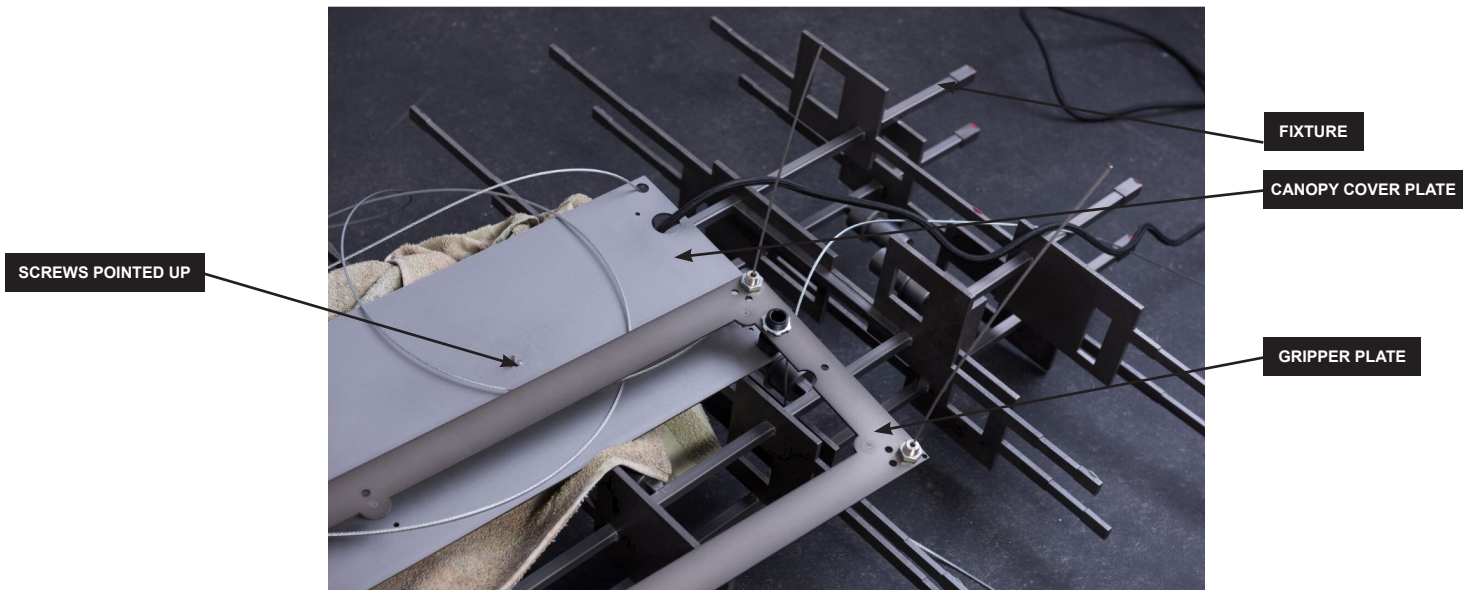
7. Attach canopy to solid framing member in at least 6 places, distributing the load evenly. It may be necessary to add additional framing members to adequately and evenly support this heavy fixture. We've supplied 5/16" x 2 1/2" lag screws with your fixture, however, different materials and/or construction methods may require different fasteners.
8. Locate fixture body.
9. Move fixture into place under canopy. Orient fixture in desired position regarding cloth covered supply wire.
10. Thread (4) cables into fixture cable mounting block.



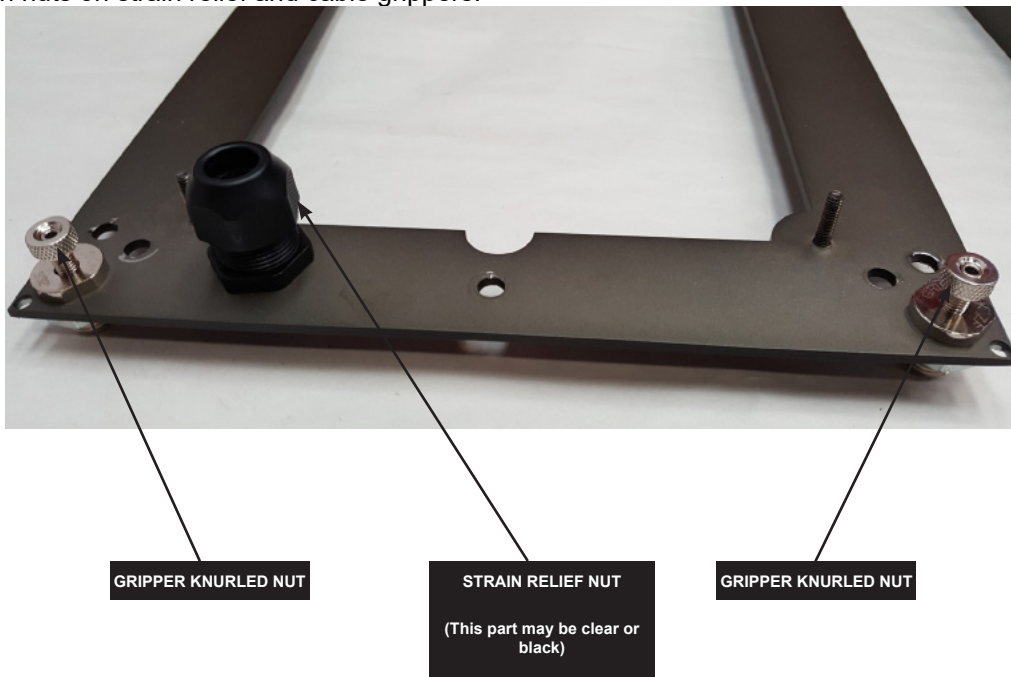
11. Locate canopy cover plate, Orient plate with screws pointing up. Feed (4) cables and (1) cloth covered supply wire through canopy cover plate. Place a protective layer on top of the fixture, to prevent scratching. Rest canopy cover plate on top of the protective layer on the fixture.



ASSEMBLY & INSTALLATION INSTRUCTIONS



12. Locate gripper plate.
13. Orient gripper plate so that studs and the knurled side of the cable grippers are facing down. Ensure strain relief is oriented on the side that you desire the cloth covered supply wire.
14. Loosen nuts on strain relief and cable grippers.

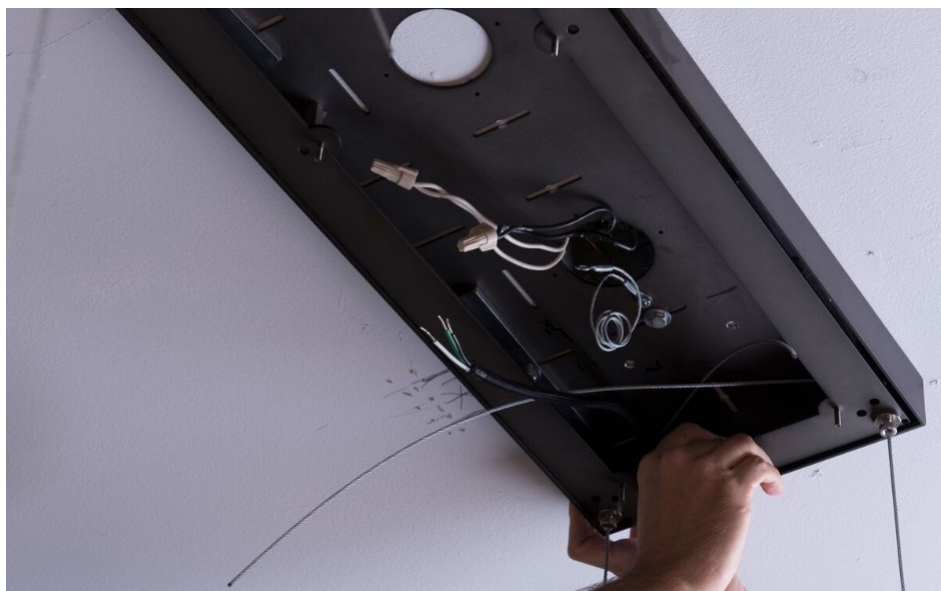


ASSEMBLY & INSTALLATION INSTRUCTIONS

15. Feed cables through grippers. Feed the cloth covered supply wire through the strain relief.



16. Attach gripper plate to the canopy using lockwashers, 1/4-20 screws and 8-32 shoulder bolts.



ASSEMBLY & INSTALLATION INSTRUCTIONS

17. Unscrew (2) 8-32 nuts from the canopy cover plate.
18. Raise canopy cover plate to canopy and attach lanyards to the studs. Secure with the 8-32 nuts.



CAUTION: LIFTING OF FIXTURE REQUIRES 2 PEOPLE

19. Lift fixture and push cables into grippers. Raise fixture to desired height.
20. Gently apply downward pressure to fixture to help set cable tension.
21. Level fixture and balance tension between all 4 cables. Fixture can be lowered by supporting fixture and then pressing in plunger on gripper and allowing cables to slide out.

CAUTION: HEIGHT AND LEVEL OF FIXTURE MAY NOT BE ADJUSTED AFTER THIS POINT. GLASS MUST BE REMOVED BEFORE ADJUSTING FIXTURE HEIGHT.

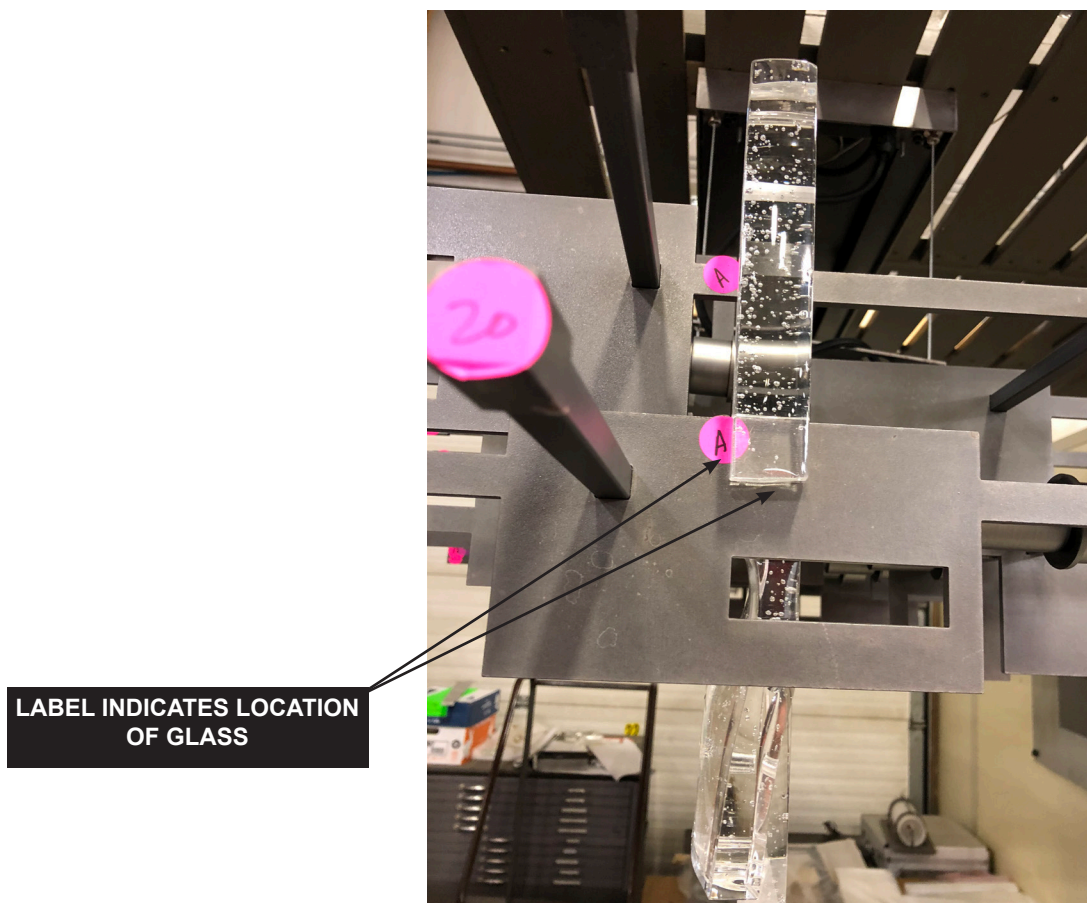
22. Tighten nuts on strain relief and cable grippers. Be sure fixture is supported by the cables not the cloth covered supply wire. For best appearance, push cloth covered supply wire up into the canopy until it is taut.
23. Using suitable wire connectors (not provided), connect fixture wires to supply wires (white to white and black to black). Connect all ground wires (bare copper or green to bare copper or green) together.

Caution: Make sure wire connectors are twisted on securely and no bare wires are exposed.

24. Install 10 light bulbs.

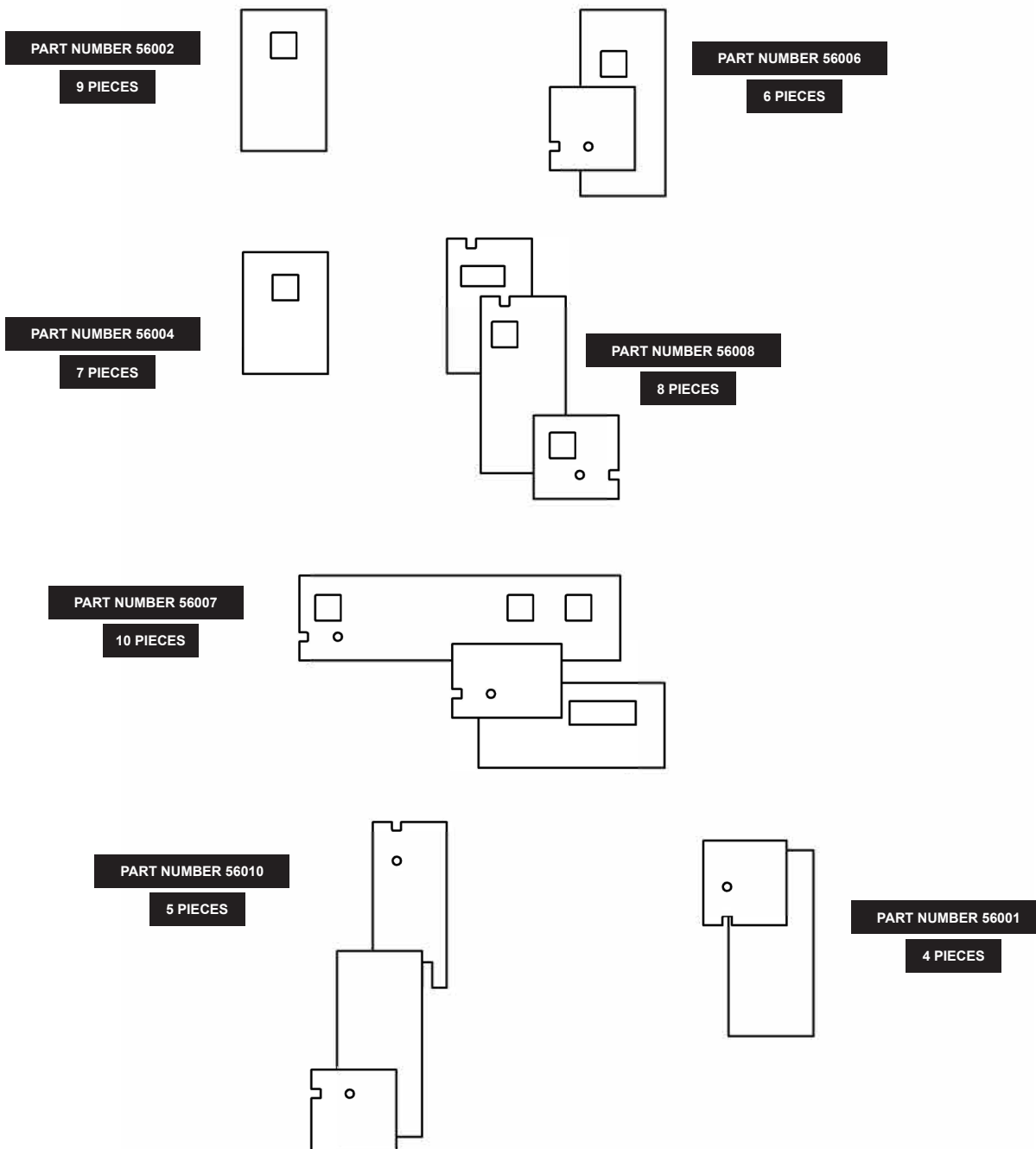
ASSEMBLY & INSTALLATION INSTRUCTIONS

25. This fixture uses 49 pieces of glass. Each piece of glass is boxed individually and labeled with a part number. Each piece of glass also has a blue dot placed on it. The dot will be used to help in describing glass orientation in these instructions.
26. The fixture has been labeled to help with glass installation. Each arm is numbered and/or labeled with letters indicating where the glass is to be installed.



27. Utilizing the chart on page 9 and the pictures following, follow the steps to install the glass. The pictures show the glass orientation as well as the arm of the fixture that the glass is to be placed. The labels on the fixture also indicate where the glass is to be located.

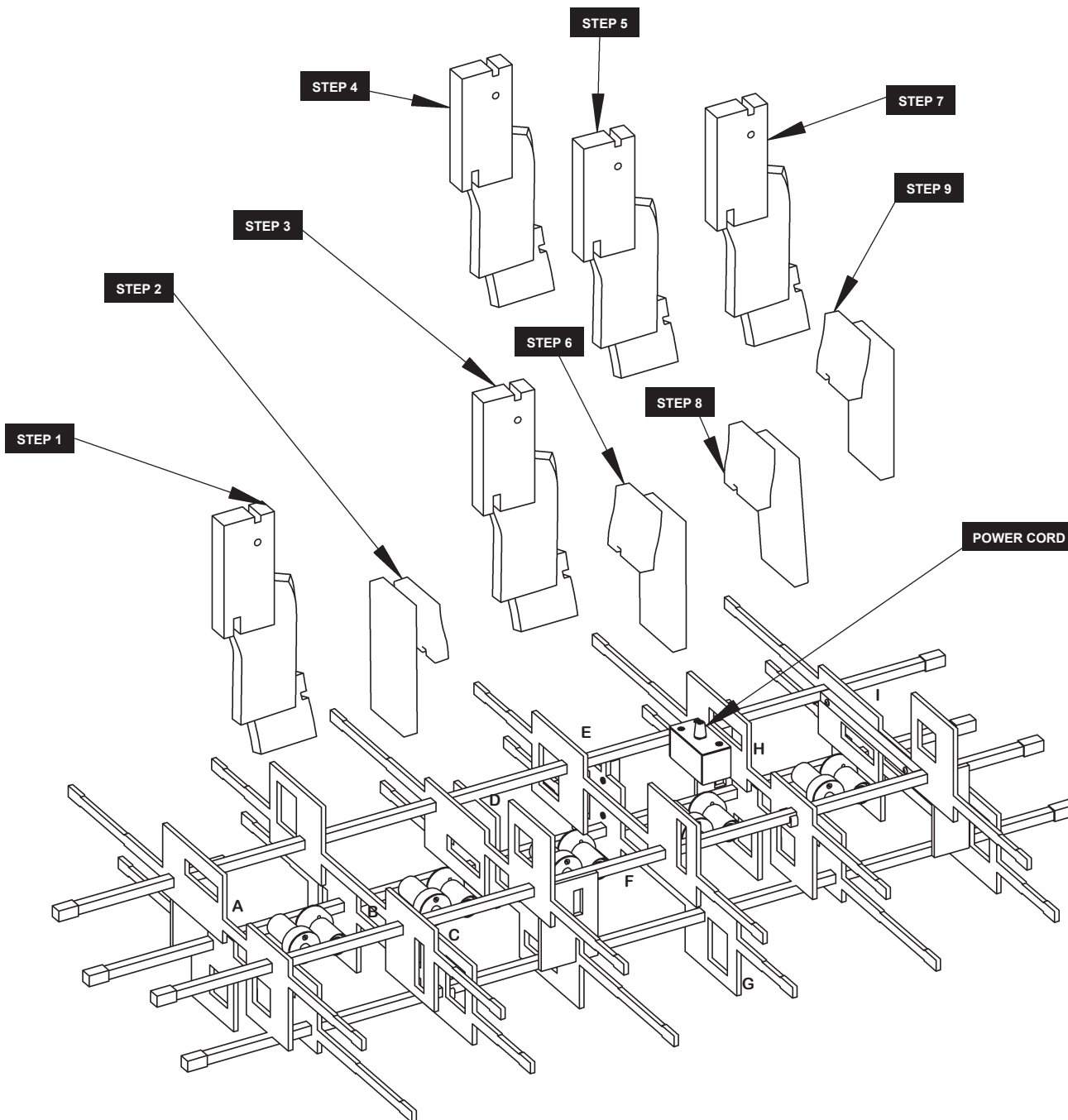
GLASS PART NUMBERS AND QUANTITIES



ASSEMBLY & INSTALLATION INSTRUCTIONS

Step	Glass Part Number	Orientation	Location	Picture
1	56010	Longer Edge against plate 2	A	Page 11
2	56001	Flat side towards plate 3	B	
3	56010	Longer edge against plate 4	C	
4	56010	Longer Edge against plate 6	D	
5	56001	Longer Edge against plate 8	E	
6	56010	Flat side towards plate 9	F	
7	56010	Longer Edge against plate 8	G	
8	56001	Flat side towards plate 11	H	
9	56001	Flat side towards plate 12	I	
10	56007	Blue dot out	30, 31, 32	Page 12
11	56007	Blue dot out	30,32	
12	56007	Blue dot out	1, 2, 4	
13	56006	Blue dot out	10	
14	56008	Blue dot out	11,12	
15	56007	Blue dot out	5, 7, 8	
16	56007	Blue dot out	4, 6	
17	56007	Blue dot out	9, 11, 12	
18	56002	Blue dot out	14	
19	56007	Blue dot out	13, 15, 16	
20	56002	Blue dot in	18	
21	56008	Blue dot in	19,20	
22	56002	Blue dot in	24	
23	56004	Blue dot out	28	
24	56006	Blue dot out	27	
25	56008	Blue dot in	25, 26	
26	56007	Blue dot in	26, 27, 28	
27	56007	Blue dot out	21,23	
28	56004	Blue dot out	31	Page 13
29	56004	Blue dot out	29	
30	56002	Blue dot out	29	
31	56008	Blue dot out	1, 2	
32	56008	Blue dot out	3, 4	
33	56006	Blue dot out	5	
34	56004	Blue dot out	3	
35	56002	Blue dot out	6	
36	56002	Blue dot out	10	
37	56004	Blue dot out	9	
38	56008	Blue dot out	7, 8	
39	56006	Blue dot out	14	
40	56002	Blue dot out	16	
41	56007	Blue dot out	21, 23	
42	56002	Blue dot out	24	
43	56006	Blue dot in	25	
44	56008	Blue dot in	17, 18	
45	56008	Blue dot in	21, 22	
46	56004	Blue dot out	20	
47	56006	Blue dot in	19	
48	56002	Blue dot out	17	
49	56004	Blue dot out	18	

ASSEMBLY & INSTALLATION INSTRUCTIONS



ASSEMBLY & INSTALLATION INSTRUCTIONS

REFERENCE GLASS INSTALLATION - 56010



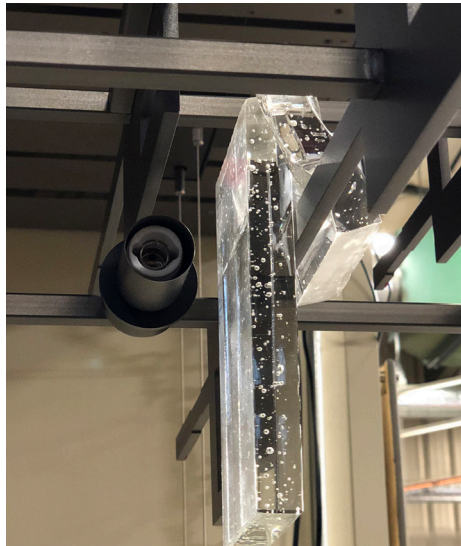
ANGLE THE GLASS
AND SLIDE IT UP
BETWEEN THE TWO
BARS



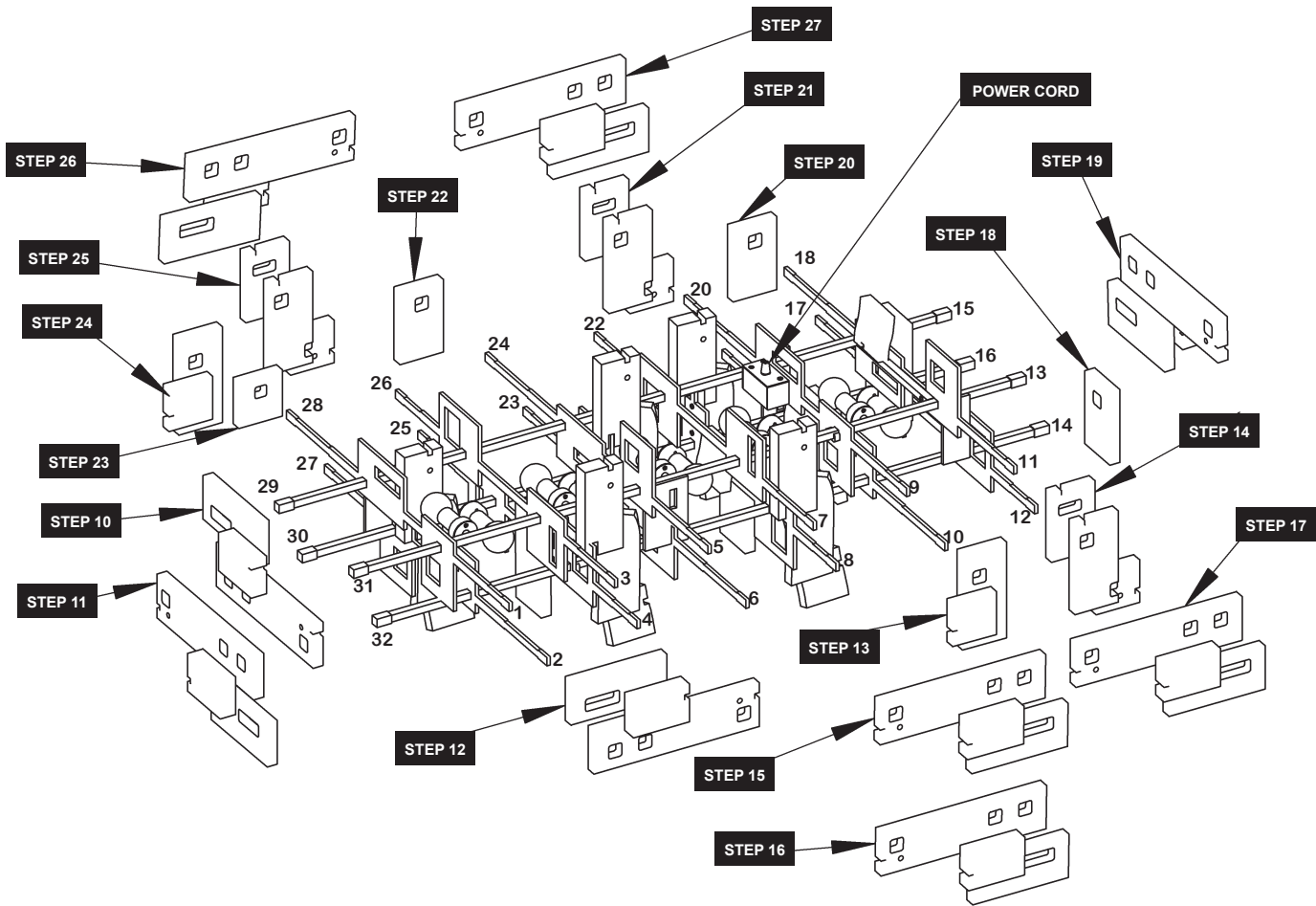
LONG EDGE OF GLASS
RESTS AGAINST THIS
BAR

NOTCH IN GLASS SITS
ON THIS BAR

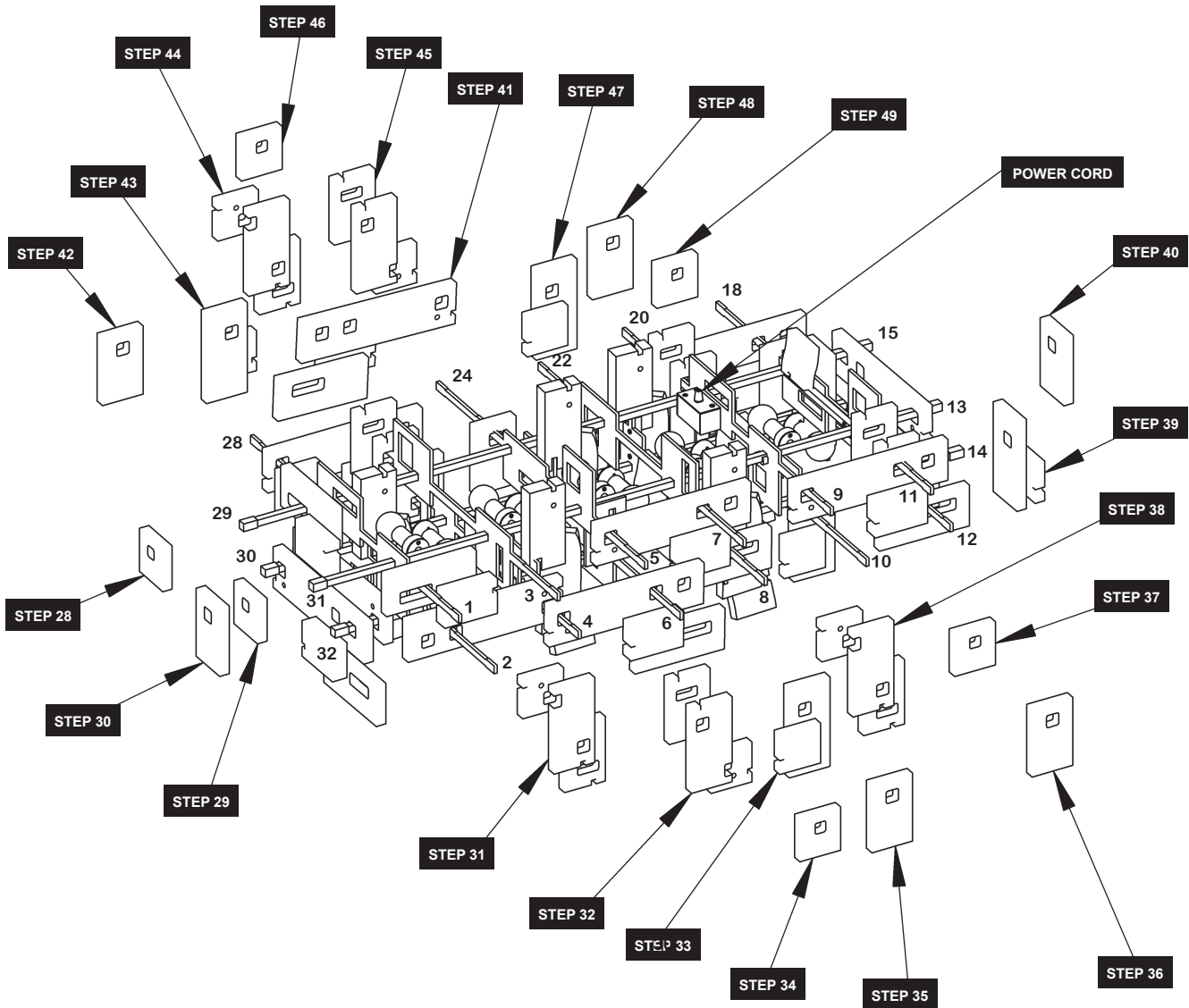
REFERENCE GLASS INSTALLATION - 56001



ASSEMBLY & INSTALLATION INSTRUCTIONS



ASSEMBLY & INSTALLATION INSTRUCTIONS



- 28. Gripper knurled nuts may have loosened during glass installation. Re-check that gripper knurled nuts are tight.
- 29. Attach canopy cover plate using the (6) barrel nuts.
- 30. Restore electricity at main breaker.

If you need further assistance, or find that you are missing any parts, please contact the dealer from which you purchased this product. We hope you enjoy your fixture!
 *ART+ALCHEMY will not be liable for injury or damage caused by improper installation, lamping or use of this fixture.