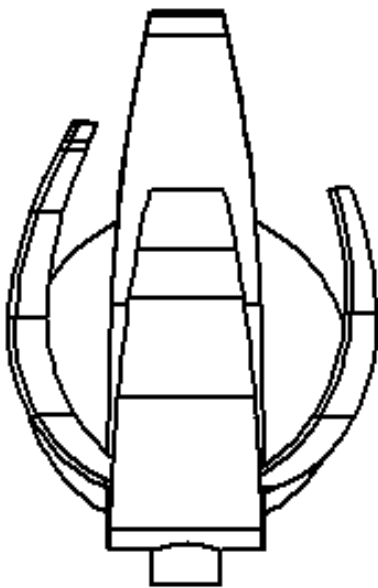


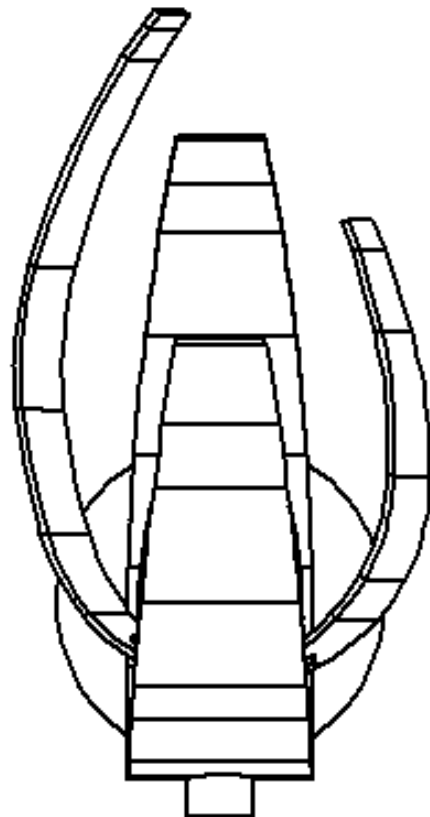
ASSEMBLY & INSTALLATION INSTRUCTIONS

Corona Sconce 206501 & 206503

B262



206501



206503



HUBBARDTON FORGE.

MODERN AMERICAN BLACKSMITHS | FINE, HAND CRAFTED LIGHTING
CASTLETON, VERMONT USA | HUBBARDTONFORGE.COM

27147 Rev A

1 OF 4

Component Parts

- A Glass
- B Bulb (not included)
- C Mounting Screw
- D Fixture Assembly
- E Ground Screw
- F Cupped Washer
- G Crossbar
- H Socket

ASSEMBLY & INSTALLATION INSTRUCTIONS

B262

Corona Sconce 206501 & 206503

CAUTION: FAILURE TO INSTALL THIS FIXTURE PROPERLY MAY RESULT IN SERIOUS PERSONAL INJURY OR DEATH AND PROPERTY DAMAGE. We recommend installation by a licensed electrician. This product must be installed in accordance with applicable installation code(s), by a person familiar with the construction and operation of the product and the hazards involved.*

Please Note: This fixture is designed to be mounted on a standard wall surface and may not be suitable for all applications. If installing in a non-wood frame application, we recommend consulting a qualified builder or electrician

Please Note: After installation extra hardware and accessories are possible due to our kits are used on multiple products and options.

To Mount Fixture to Wall and Install Glass (Figure 1, next page)

CAUTION: BE SURE POWER IS OFF AT THE MAIN BREAKER BOX PRIOR TO INSTALLATION.

1. Carefully unpack fixture (A) from the carton.
2. Using two machine screws (not provided), fasten the crossbar (G) to the electric box making sure that fixture mounting holes are level. The bent tab on the crossbar (G) should be on the top and facing away from the wall.

Note: A new electric box comes with screws. When replacing a fixture, retain the existing screws for use with the new fixture.

3. Hold the fixture assembly close to the wall and using suitable wire connectors, not provided, connect fixture wires to supply (white to white and black to black). Run a pigtail lead from the crossbar ground screw (E) and cupped washer (F) to the junction box. Connect all ground wires (bare copper or green to bare copper or green).

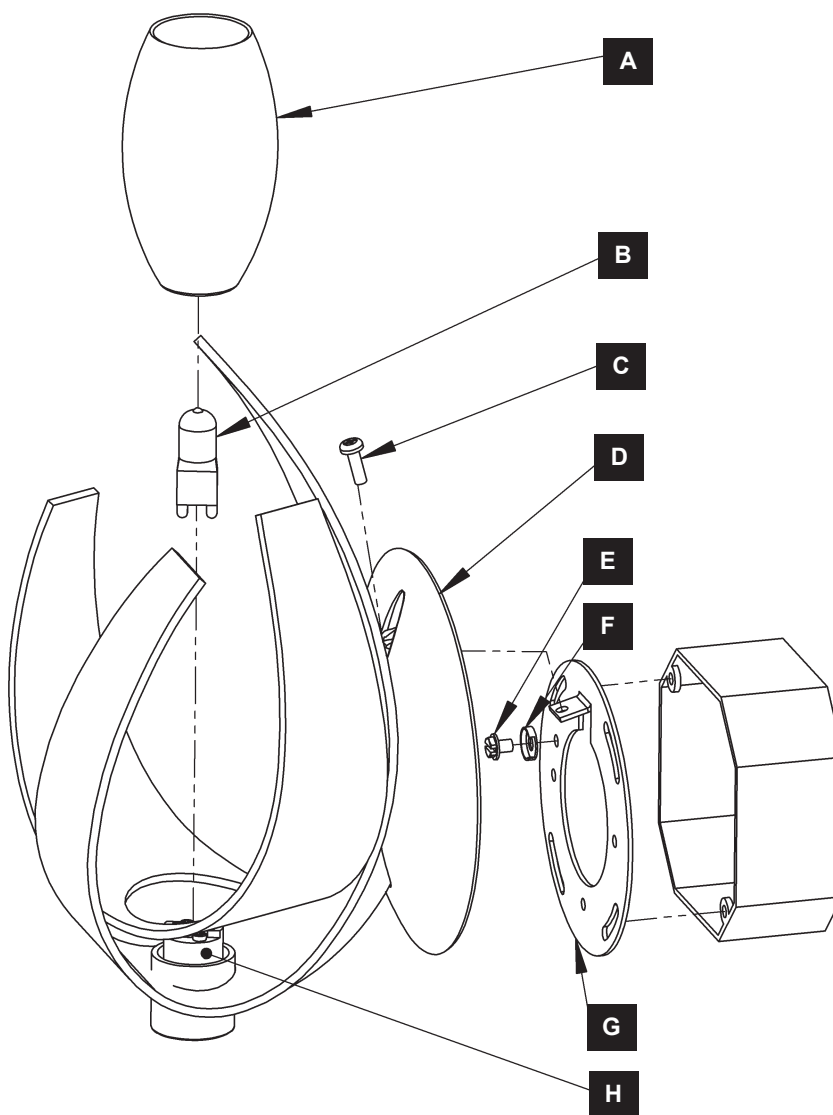
CAUTION: MAKE SURE WIRE CONNECTORS ARE TWISTED ON SECURELY, AND NO BARE WIRE IS EXPOSED.

4. Slide fixture assembly (D) over crossbar (G) and push firmly to wall, making sure that no wires are pinched between fixture back and wall. Align hole in the fixture back with the bent tab in the crossbar (G). Using a Phillips head screwdriver, fasten with mounting screw (C) until fixture is tight against the wall.
5. Install light bulb (B), (not included). *Be careful not to touch bulb with bare hands; oil from the hands will dramatically reduce bulb life.*
6. Thread glass (A) onto socket (H) and thread until snug against fixture. *Be careful not to over tighten.*
7. Restore electricity at the main breaker.

ASSEMBLY & INSTALLATION INSTRUCTIONS

Corona Sconce 206501 & 206503

B262



(Figure 1)

If you need further assistance, or find that you are missing any parts, please contact the dealer from which you purchased this product. We hope you enjoy your fixture!

*** Hubbardton Forge will not be liable for injury or damage caused by improper installation, lamping or use of this fixture.**



HUBBARDTON FORGE.

MODERN AMERICAN BLACKSMITHS | FINE, HAND CRAFTED LIGHTING
CASTLETON, VERMONT USA | HUBBARDTONFORGE.COM

27147 Rev A

4 OF 4